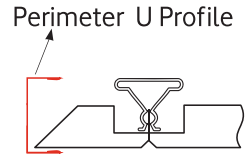
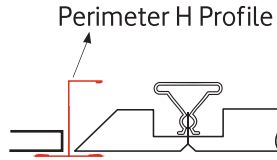
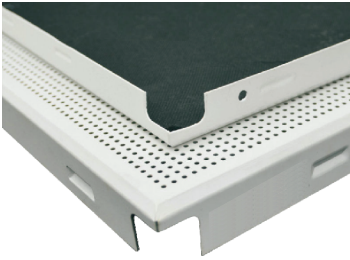


## CLIP IN CEILING PANELS

Clip in Metal Suspended Ceiling Panels have an esthetic view and fully suitable with Clip in Omega Carrier Profiles, that are hidden after installation.

When being used with H profiles, provides equally levelled suspended ceiling and saves from labour and consume of accessories.

Metal Suspended Ceiling System. According to Turkish Standard "Suspended Ceilings – Requirements and Test Methods", our profiles' load carrying capacity is tested with 'Metal Suspended Ceiling Profile Bending Test' and carried 16,5 kgs on 1.000 mm sample and achieved successful performance with less than 0,15 mm. curve. Metal Panel is classified as high quality material. Clip In Metal Panels: 60x60 cm, 0,70mm thickness, minimum 70 microns electrostatic (polyester based) powder coated, with or without acoustic fabric inside, perforated or flat aluminium sheets (EN AW 3000 series) suitable to hidden carrier system.



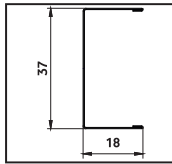
### CLIP IN SYSTEM CARRIER AND ACCESSORIES UNIT/m<sup>2</sup> ANALYSE

MATERIAL	600 x 600 mm module	300 x 300 mm module
1- Omega profile	2,50 m.	3,60 m.
2- U profile	0,50 m.	0,70 m.
3- Hanger bracket	0,70 pcs.	0,70 pcs.
4- Spring Clips	1,50 pcs.	3,00 pcs.
5- Ceiling liner connector	0,50 pcs.	0,50 pcs.
6- Perimeter fixing spring	1,00 pcs.	2,00 pcs.
7- Hanger wire	0,70 pcs.	0,70 pcs.
8- Steel Anchor	0,70 pcs.	0,70 pcs.

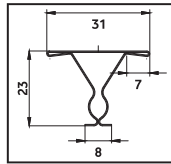
\*THIS ANALYSES ARE PREPARED FOR REQUIREMENTS FOR 30x30 cm 33 m<sup>2</sup>

\*THIS ANALYSES ARE PREPARED FOR REQUIREMENTS FOR 60x60 cm 66 m<sup>2</sup>

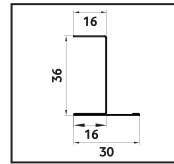
## CLIP-IN METAL SUSPENDED CEILING PROFILES



Perimeter U



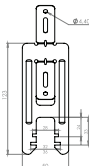
OMEGA PROFILE



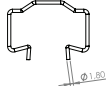
Perimeter H



Omega Coupler



Hanger Bracket



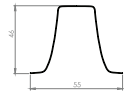
Spring Clips



Hanger Wire



Steel Anchor



Perimeter Fixer

Standards: TS-EN-13964-04 • ISO 9001 • ISO 14001 • CE • ISO 18001

**Material:** Pannels are made of corrosion resistant aluminium or hot dip galvanised steel that homogen, A1 Class Fire Resistant, with min. 70 microns of electrostatic polyester powder coated.  
**Perforation:** Pannels are available as flat (no perforation), full perforated, perforated with 5 or 10 cm borders.

**Perforation hole diameters:** Holes are 2,5 mm as standard and give %16 total perforation, any requested diameters are possible.

**Aqoustic Performance:** Alpha-w / NRC 0,70 with the aqoustic 0,2 mm thick fire proof fabric inside.

**Finishing detail of pannel:** Clip In metal plate with special connection point.

**Carrier System:** Roll formed, corrosion resistant hot dip galvanised homogen, A1 Class Fire Resistant steel

**Pannel Dimensions:** 600x600mm, 300x300mm or any required dimension.

**Maximum Curve:** According to standard TSE-EN-13964 "Suspended Ceilings – Requirements and Test Methods" for metal suspended ceiling pannels, maximum curve should be 0,05mm after 28 days under load.

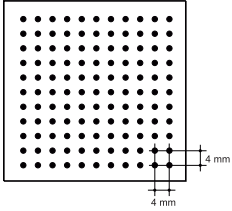
**Carrier system:** According to standard TSE-EN-13964 our profiles load carrying capacity is tested and achieved the load carrying performance with less than 0,2 mm. curve.

**Material Colour:** Pannels : RAL 9016 White as Standard or any requested RAL colour

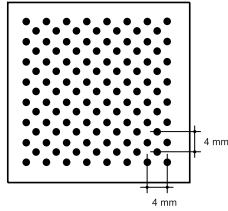
**Carriers :** Special colours, RAL 9016 white as standard or any requested RAL colour.

## CLIP IN CEILING PANELS

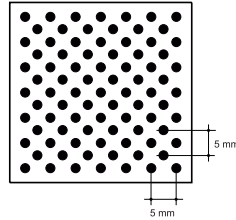
### PANEL DIMENSIONS and PERFORATION OPTIONS



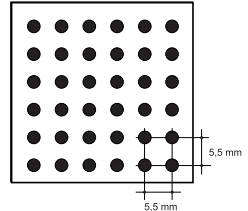
Ø 0,7 mm  
Extra Micro Perforation  
%2,4 empty



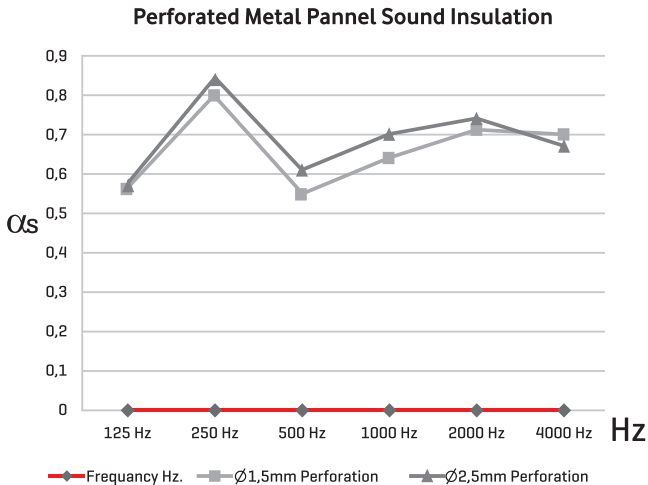
Ø 1,5 mm  
Micro Perforation  
%22 empty



Ø 1,8 mm  
Micro Perforation  
%21 empty



Ø 2,5 mm  
Standard Perforation  
%16 empty



Frequency Hz.	125 Hz.	250 Hz.	500 Hz.	1000 Hz.	2000 Hz.	4000 Hz.	$\alpha_w$	NRC
Ø 1,5mm per	0,56	0,8	0,55	0,64	0,71	0,70	0,65	0,65
Ø 2,5mm per	0,57	0,84	0,61	0,7	0,74	0,67	0,70	0,70